

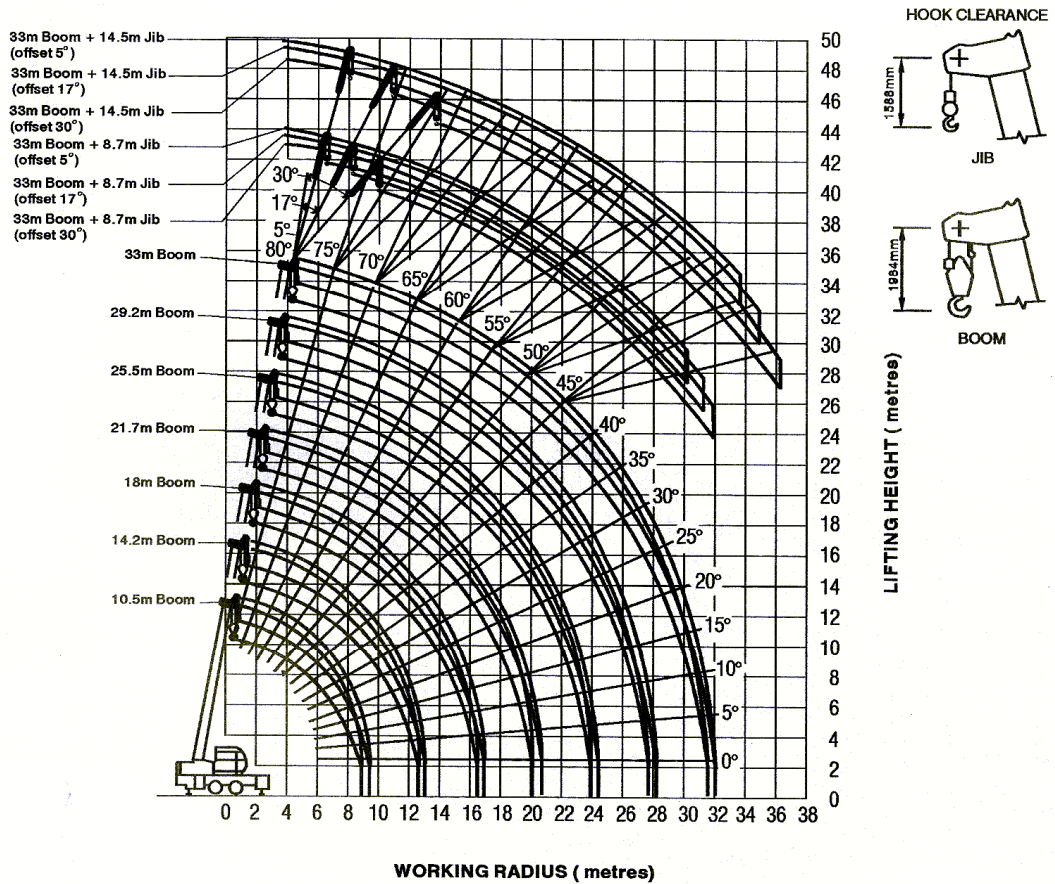
KATO NK-250-v2

30 TONNE HYDRAULIC SLEW CRANE



Range Diagram

WORKING RADIUS - LIFTING HEIGHT DIAGRAM



NOTES

- (1) The above lifting heights and boom angles are based on a straight (unladen) boom, and allowance should be made for boom deflection obtained under laden conditions.
- (2) The diagram is shown as with the outriggers fully extended.